

Smart Lock Solution

User Manual



KEY FREE. BE FREE



Pat. Pending



Smartphone



Remote



Fingerprint



Code



Table of Content

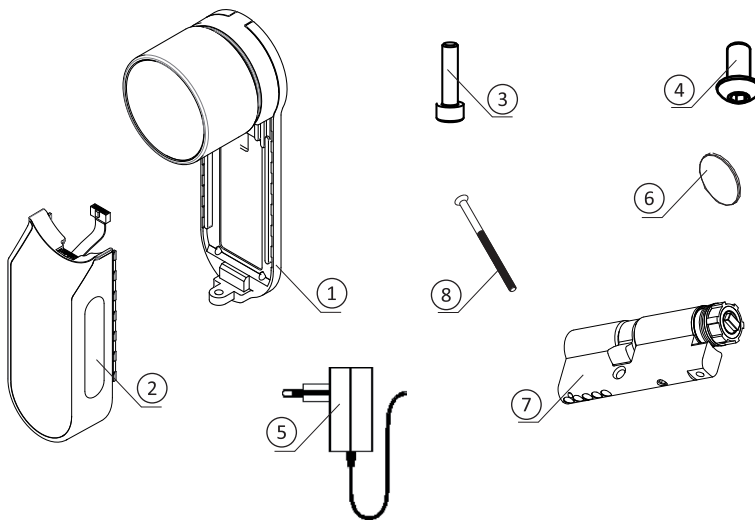
1. Cylinder Installation	4
1.1 Package content	4
1.2 Tools required	4
1.3 Prior to installation	5
1.4 Cylinder & unit Installation	5
1.5 Magnet fitting	6
1.6 Cylinder to unit assembly (optional)	6
2. ENTR™ description	8
2.1 ENTR™ description	8
2.2 Indications	8
2.3 ON/OFF switch	9
2.3.1 Switching the ENTR™ ON	9
2.3.2 Switching the ENTR™ OFF	9
2.3.3 Low battery indication	9
2.4 Initiating the lock	9
2.5 Default PIN code	9
3. Operation	10
3.1 Changing PIN code	10
3.2 Door configuration	11
3.3 Pairing remote control	12
3.4 Deleting remote control	13
3.5 Setting the sound signal	14
3.6 Setting locking mode	14
3.7 Operated by knob	15
3.8 Operated by slide buttons	15
4. Touchpad Reader	16
4.1 Changing PIN code	16
4.2 Battery replacement	16
4.2.1 Low battery indication	16
5. Touchpad Reader operation	17
5.1 Operation	17
5.2 Pairing Touchpad Reader	17



- 5.3 Touchpad Reader master PIN code 18
- 5.4 Menu mode 18
- 5.5 Adding personal user code 18
- 5.6 Open door 18
- 5.7 Lock door 18
- 5.8 Delete personal user code 19
- 5.9 Delete all personal user codes 19
- 5.10 Factory reset 19
- 6. Fingerprint Reader 20**
- 6.1 Mounting the Fingerprint Reader 20
- 6.2 Battery replacement 20
- 6.3 Initial configuration 21
- 6.4 Pairing fingerprint reader 21
- 6.5 Unlock the door 23
- 6.6 Lock the door 23
- 6.7 Low battery indication 23
- 6.8 Setting menu 24
- 6.9 Add user 24
- 6.10 Delete user 25
- 6.11 Delete all users 25
- 6.12 Factory reset 25
- 7. Smartphone application 26**
- 7.1 Application installation 26
- 7.2 Pairing a smartphone 26
- 8. Remote control battery change 27**
- 8.1 Battery removal 27
- 8.2 Battery insertion 28
- 9. Troubleshooting 29**
- 9.1 Limitations and external influences 29
- 9.2 Cases 29
- Limited warranty 30**

1. Cylinder Installation

1.1 Package content



1 Base plate & Knob

2 Electrical unit

3 Cylinder mounting screw

4 Panel screw

5 Battery charger

6 Magnet

7 Cylinder

8 M5 screw

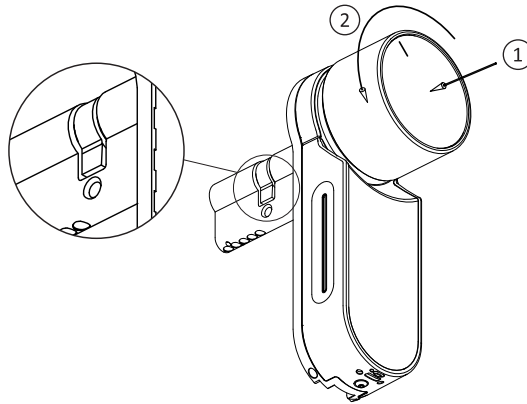
1.2 Tools required

- Allen key 2 mm
- Allen key 3 mm

1.3 Prior to installation

Warning: Do not attempt to operate the unit until assembled into the door

- Press & hold the knob (1) and turn it slightly (2) until the cylinder cam is no longer protruding from the side of the cylinder body (see illustration).



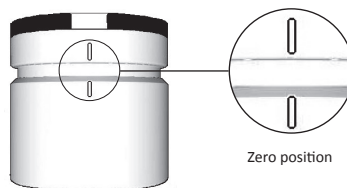
1.4 Cylinder & Unit installation

- Insert the cylinder (with base plate & knob) from the internal side of the door.
- Once the cylinder is correctly aligned in the door secure the cylinder in place using the M5 screw.
- Do not over tighten the screw or use power tools.

Note: Do not hammer (or otherwise force) either the cylinder or knob when inserting into the door.

- Turn the knob back to zero position. Knob marks are pointing up.

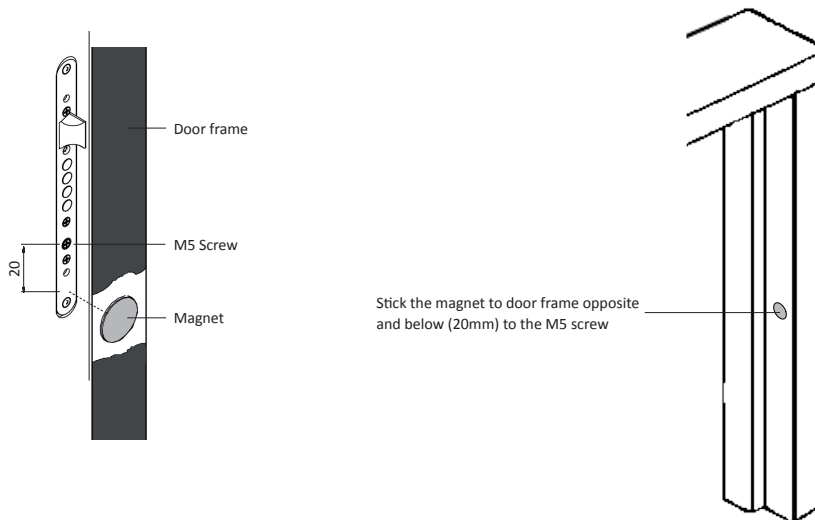
Note: The knob will jump out when returned to zero position.



1.5 Magnet fitting

- Stick the magnet to the door frame opposite and below (20mm) to the cylinder fixing screw (M5 screw).
- Use the double sided sticker supplied.

Note: The magnet area on door frame should be clean and free from dust, peeling paint etc. Use alcohol if required. Wait until completely dry prior to sticking.

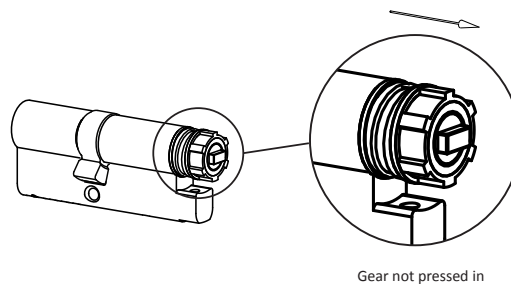


1.6 Cylinder to unit assembly (optional)

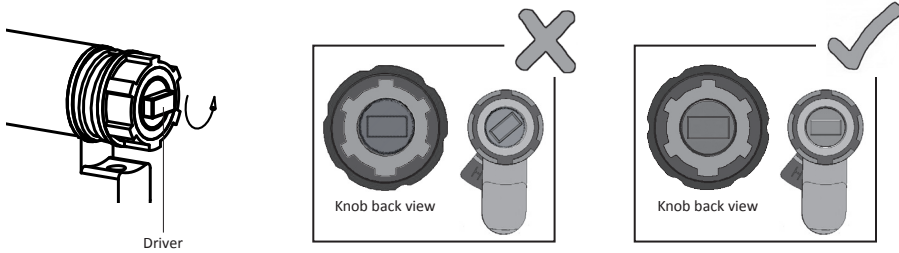
Note: Follow those instructions only if the cylinder was dismantled from the door unit.

- Insert operating key into the external side of the cylinder and turn one full turn.
- Take the key out.

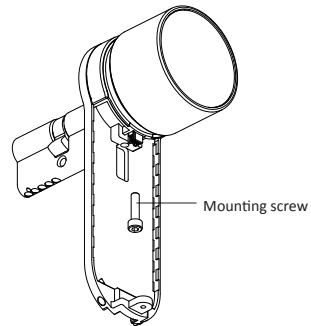
Note: Verify that the gear is not pressed in.



- Verify the knob is in zero position. Knob marks are pointing up (see page 5).
- Verify that the rectangle driver (cylinder) is in the same direction as the knob rectangle bore. If required turn the rectangle driver (cylinder) until it is in the same direction (see illustration below).

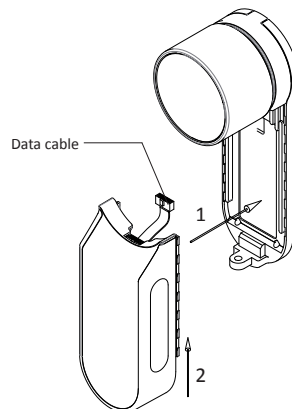


- Assemble the cylinder into the door unit (base plate & knob).
- Tighten cylinder mounting screw.



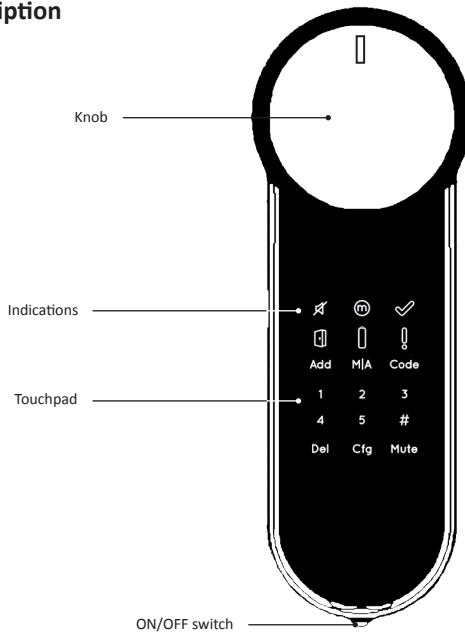
Note: Verify that the cylinder and the knob are engaged. Press the knob and try to turn. If the knob can not be pressed or turned, disassemble the cylinder, adjust the cylinder projecting rectangle and reassemble.

- Connect data cable plug
- Assemble Electrical unit as illustrated
- Tighten electrical unit panel screw

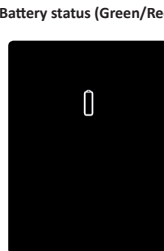
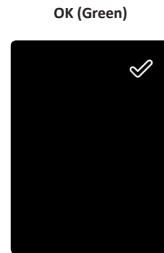


2. ENTR™ description

2.1 ENTR™ description



2.2 Indications



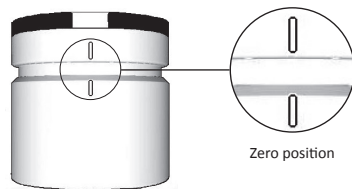
2.3 ON/OFF switch

- Turning the ENTR™ lock **ON** or **OFF**.

2.3.1 Switching the ENTR™ ON

Before switching the ENTR™ **ON** verify that the door is shut.

- Move the switch to **ON** position. Make sure that the knob is in zero position (see illustration).



- Function and numeric buttons blinks once.
- Hazard beep sound emitted and error indication blinks once.
- The ENTR™ will go into operating mode.

Note:

- After switching the ENTR™ **ON** avoid touching the ENTR™ until beep sound ends.
- After switching the ENTR™ **ON** the door is shut but not locked.

2.3.2 Switching the ENTR™ OFF

- Move the switch to **OFF** position.

2.3.3 Low battery indication

Warning signal blinking rapidly and long beep emitted on every lock/unlock action.



2.4 Initiating the lock

Initiate the lock by touching the screen with palm or fingers for 3 seconds.

- Programming buttons and battery status indication illuminates for 15 seconds, waiting for user action.
- After a period of 15 seconds of inactivity the ENTR™ will go idle.

2.5 Default PIN code

The lock is supplied with a default PIN code: **1 2 3 4 5 #**

Note:

- Default PIN code must be changed before starting configuration process.
- The PIN code may consist of 4-10 digits, each having a value of 1-5.
- Only **[Code]** and **[Mute]** functions will operate until changing the default PIN code.



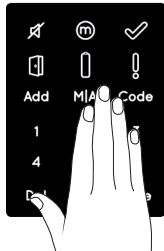
3. Operation

3.1 Changing PIN code

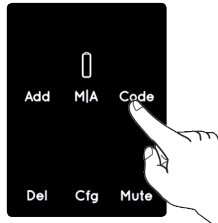
Warning: Do not attempt to operate the unit until assembled into the door.



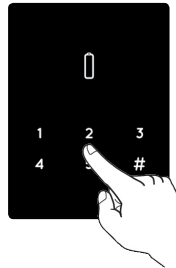
1
Touch screen with palm or fingers for 3 seconds to activate



2
Press [Code]
Numeric buttons illuminated



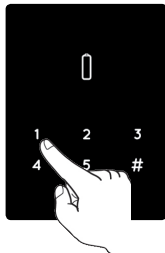
3
Type [Default PIN code]
(1 2 3 4 5) → [#]



4
[OK] indication blinks once
1 long beep emitted
Illuminated buttons turn off



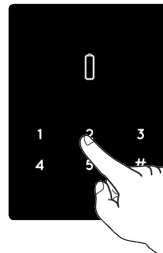
5
Numeric buttons illuminated Enter [New PIN code] (4-10 digits) → [#]
For example: 1231234#



6
[OK] indication blinks once
1 long beep emitted
Illuminated buttons turns off



7
Numeric buttons illuminated Reenter [New PIN code] → [#]
For example: 1231234#



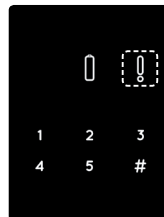
PIN codes match

[OK] indication illuminated
2 short beep emitted
New PIN code is set



PIN codes do not match

[Error] indication illuminated
2 long Beeps emitted for 1 second
ENTR™ goes to menu mode
Start the process from stage 1

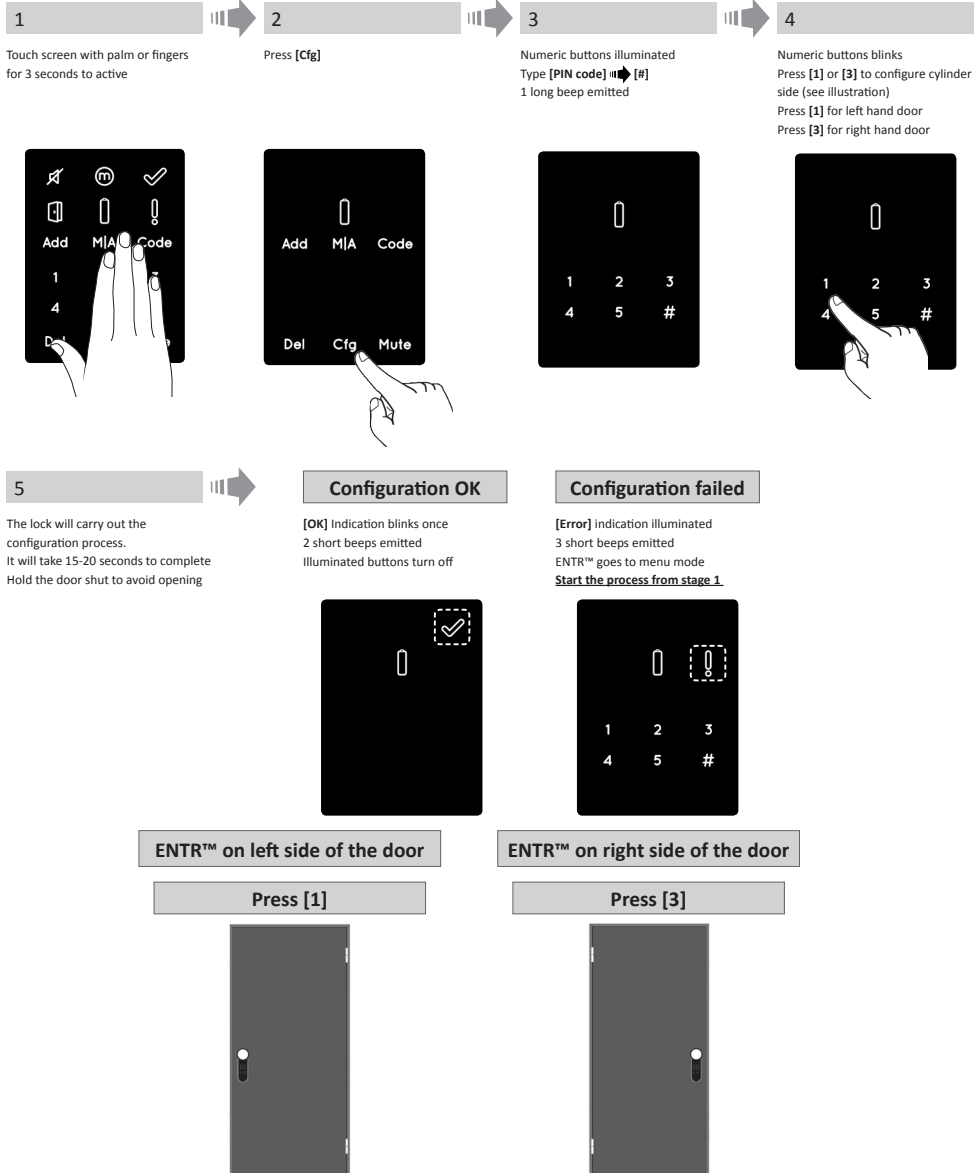


3.2 Door configuration

The Door Configuration process will determine the lock and door characteristics.

This process is done once after completing the installation process of the lock. It will take 15-20 seconds to complete.

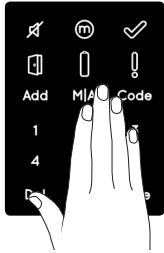
Important: Verify that the door is shut and no key is inserted into the cylinder prior to any configuration process



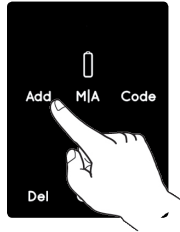
3.3 Pairing remote control



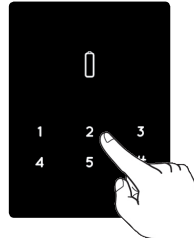
1
Touch screen with palm or fingers for 3 seconds to activate



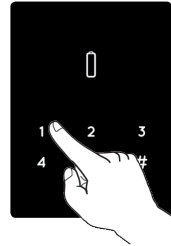
2
Press [Add]



3
Numeric buttons illuminated
Type [PIN code] → [#]
Numeric buttons blinking



4
Press [1] to add remote control
Illuminated buttons turn off
[OK] indication blinks for 15 Seconds waiting for remote control unit



5

Press the remote control button



Remote control button

Pairing OK

[OK] indication blinks once
2 short beeps emitted
Remote control unit added



Pairing failed

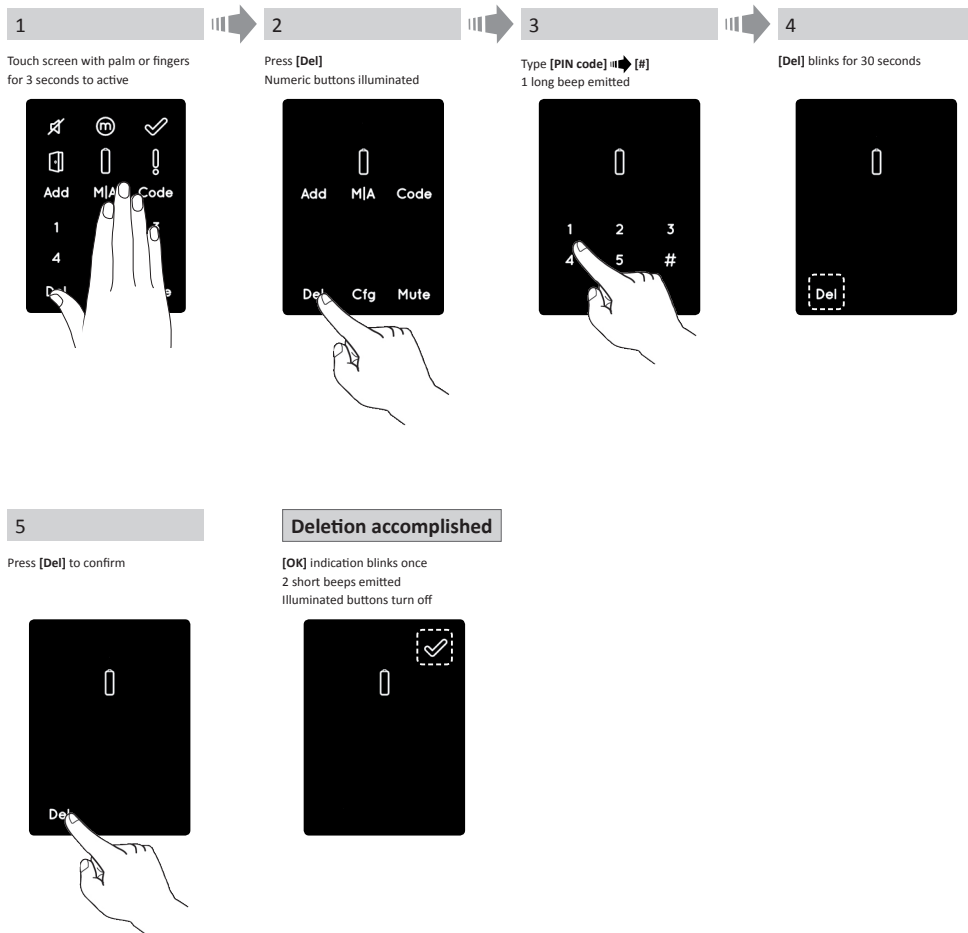
[OK] indication blinks for 15 seconds
No beeps emitted
Start the process from stage 1.

Notes:

- To add more remote control units repeat this procedure
- A remote control unit can be paired with only one single door unit
- It is possible to add up to 20 remote control units
- Only authorized dealer can reset a paired remote

3.4 Deleting remote control

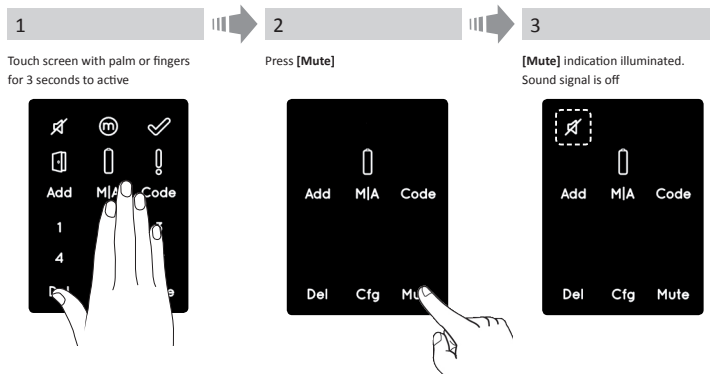
The Deleting remote control process will delete **all** remote control units defined in the system.



Note: Wall reader and smartphone connected to the ENTR™ lock will not be deleted

3.5 Setting the sound signal

toggling the sound signal **OFF** or **ON**

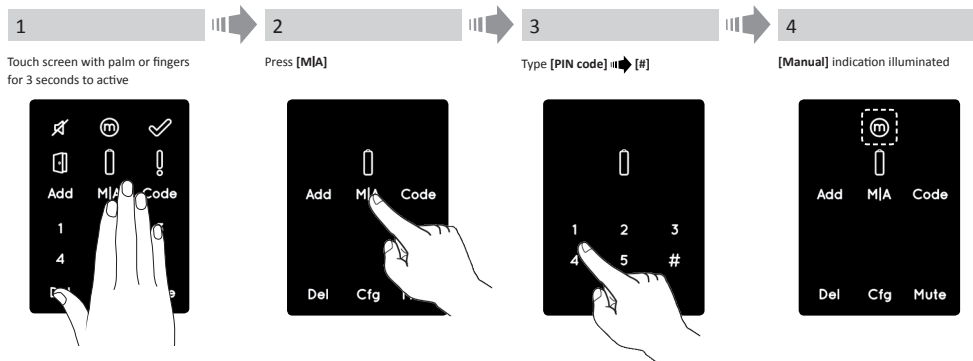


Notes:

- Setting the ENTR™ lock sound to **OFF** will mute the lock & unlock sounds and the open door hazard signal. It will not mute the touchpad, mechanical override and low voltage sounds
- Follow the same procedure to toggle the sound **[ON]**

3.6 Setting locking mode

toggling **Automatic** to **Manual** locking mode

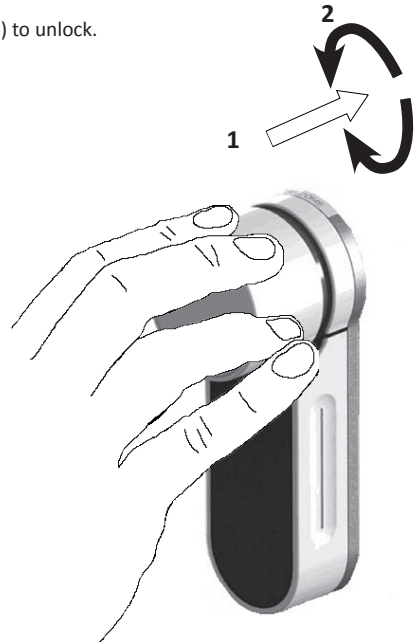


Notes:

- Setting the ENTR™ lock to **[Manual]** will disable the automatic locking
- Follow the same procedure to set the ENTR™ lock to **[Automatic]**

3.7 Operated by knob

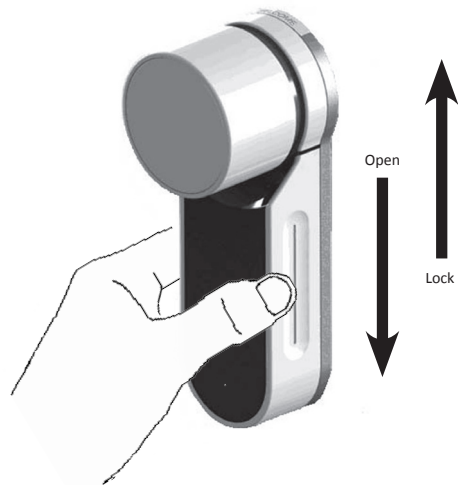
Push the knob (1) and turn Clockwise or Counterclockwise (2) to unlock.
Beep sound emitted during knob operation.



3.8 Operated by slide buttons

Slide your fingers on the recessed grooves on both sides of the ENTR™:

- To open slide fingers downwards on the recessed grooves on both sides.
- To lock slide fingers upwards on the recessed grooves on both sides.

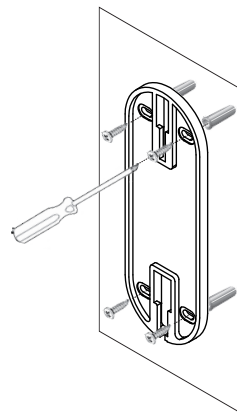


4. Touchpad Reader

4.1 Mounting the Touchpad Reader

Prior to starting, select the location where the Touchpad Reader is to be mounted.

- Attach the Touchpad Reader base plate to the wall.
- Use 4 screws and screw anchors or double sided glued tape.



4.2 Battery replacement

1. Release lid screw and open the lid
2. Put in the batteries (2xAA) according to the "+" "-" signs
3. Close the lid and tighten the screw

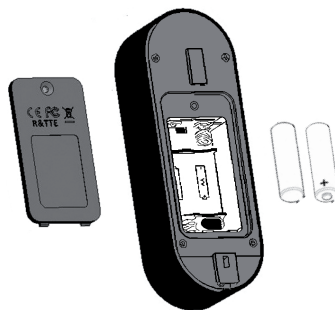
Notes:

- After inserting the batteries the Touchpad Reader will turn on automatically
- A short beep sound emitted and Green **[OK]** indication illuminated for 2 seconds.

Important: Do not touch the Touchpad during the self test procedure and until the lights are off.

4.2.1 Low battery indication

Red warning signal blinking rapidly and long beep emitted on every lock/unlock action.



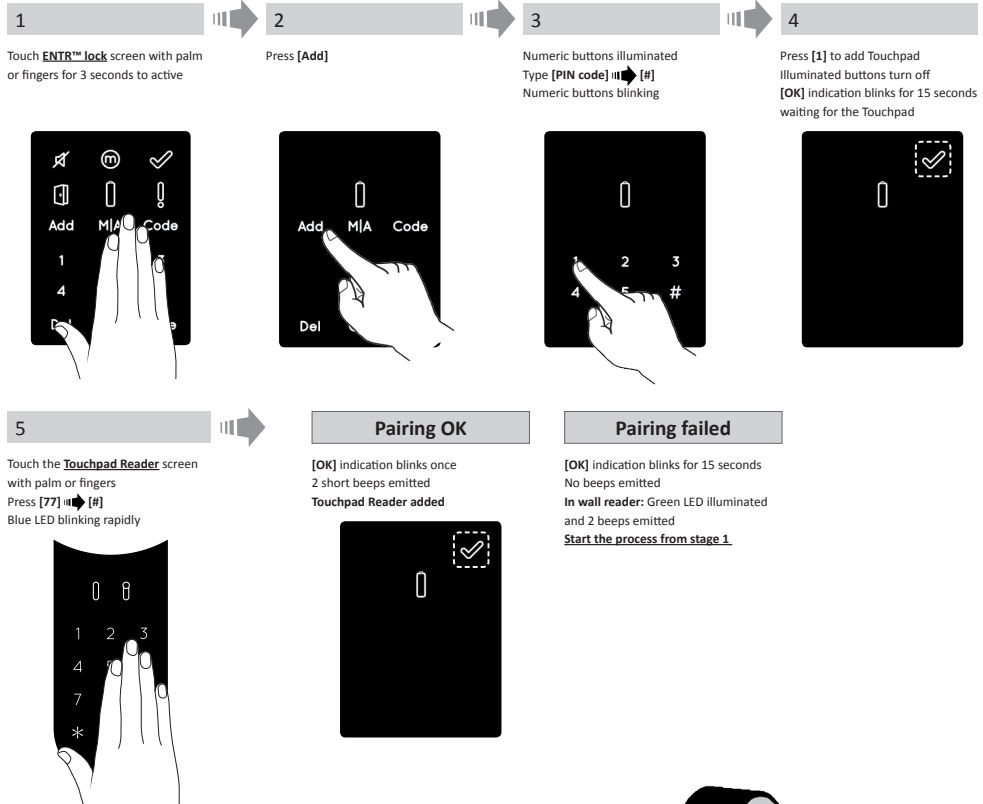
5. Touchpad Reader operation

5.1 Operation

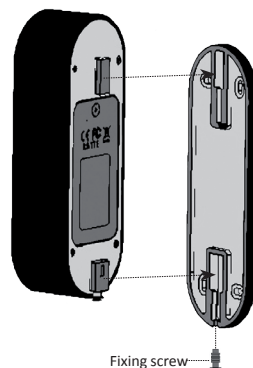
To turn the Touchpad Reader **ON** press [#] for 5 seconds. The reader will perform a self test followed by series of beeps. LED blinks Green, Red, Blue.

5.2 Pairing Touchpad Reader

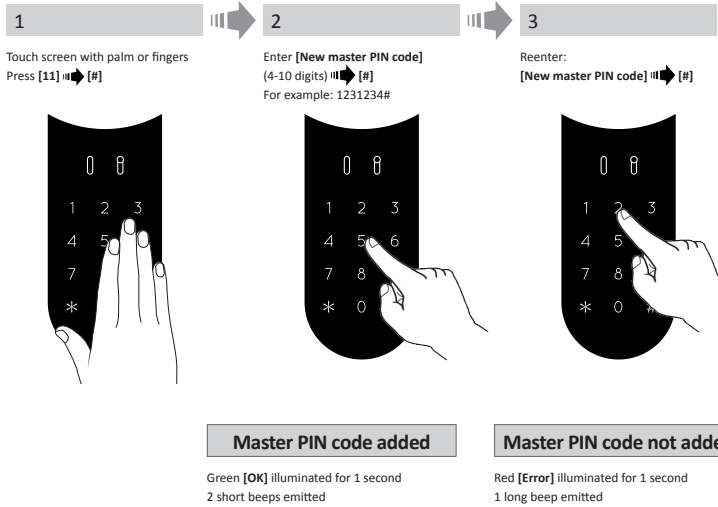
This procedure is done via the ENTR™ lock. See also Pairing Remote Control unit procedure.



- Hang the Touchpad Reader on the base plate.
- Tighten fixing screw.



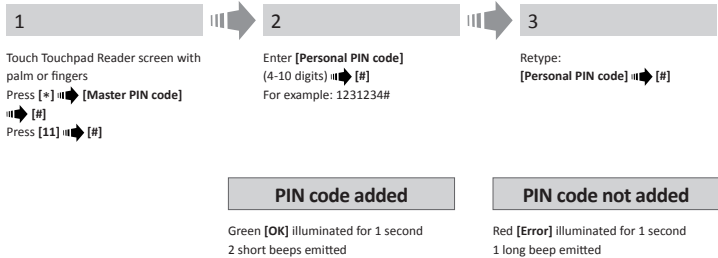
5.3 Touchpad Reader master PIN code



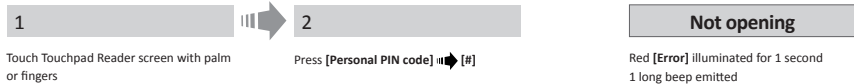
5.4 Menu mode

Entering menu mode: Press [*] ➡ [Master PIN code] ➡ [#]

5.5 Adding personal user code (up to 20 different codes)



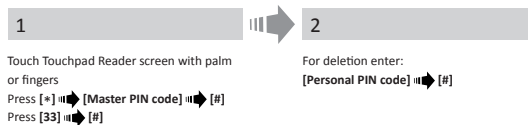
5.6 Open door



5.7 Lock door



5.8 Delete personal user code



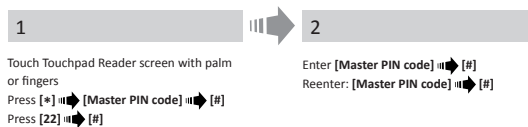
Personal code deleted

Green [OK] illuminated for 1 second
2 short beeps emitted

Personal code not deleted

Red [Error] illuminated for 1 second
1 long beep emitted

5.9 Delete all personal user codes



Personal PIN codes deleted

Green [OK] illuminated for 1 second
2 short beeps emitted

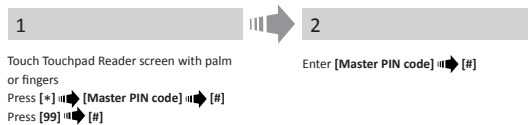
Note: Master PIN code can not be deleted

Personal PIN codes not deleted

Red [Error] illuminated for 1 second
1 long beep emitted

5.10 Factory reset

The reset action will delete all PIN codes (master and personal) and will cut off the Touchpad Reader from the ENTR™ lock.



Personal and master PIN codes deleted

Green [OK] illuminated for 1 second
2 short beeps emitted
Device performing self test & is factory reset

Personal and master PIN codes not deleted

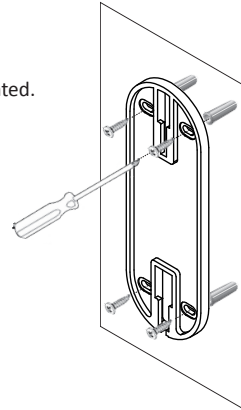
Red [Error] illuminated for 1 second
1 long beep emitted

6. Fingerprint Reader

6.1 Mounting the Fingerprint Reader

Prior to starting, select the location where the Fingerprint Reader is to be mounted.

- Attach the Fingerprint Reader base plate to the wall
- Use 4 screws and screw anchors or double sided glued tape



6.2 Battery replacement

1. Release lid screw and open the lid
2. Put in the batteries (2xAA) according to the "+" "-" signs
Green LED illuminated for 2 seconds
3. Close the lid and tighten the screw



6.3 Initial configuration

1. Touch [#] for 3 seconds. The reader will perform self calibration followed by a series of beeps and blinking LEDs. At the end of the calibration the screen will display:



2. Adjust Date & Time.

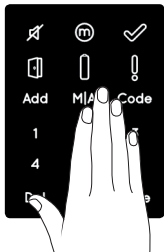


6.4 Pairing fingerprint reader

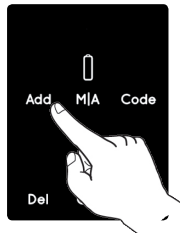
This procedure is done via the ENTR™ lock. See also Pairing Touchpad Reader procedure.



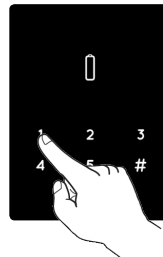
1 Touch ENTR™ lock screen with palm or fingers for 3 seconds to active



2 Press [Add]



3 Numeric buttons illuminated Type [PIN code] → [#] Numeric buttons blinking



4 Press [1] to add the reader Illuminated buttons turn off [OK] indication blinks for 15 seconds waiting for the reader



5

Touch Fingerprint Reader screen 2 short beeps emitted Press [OK] for YES or [*] to cancel



Pairing OK

[OK] indication blinks once 2 short beeps emitted Fingerprint Reader added



Pairing failed

1 long beep emitted Red LED illuminated for 2 seconds



Note: At the end of the initial matching process a short warning will be displayed.



Setting a Master User require both fingerprint & code. It is possible to add up to two Master Users. it is possible to add up to two master users.

Note: At any stage press and hold the [*] key to move to standby state

6. Add Master

Type in [Master name] [OK]

MASTERNAME

JOHN

MASTER #01

JOHN

7. Set finger

Blue LED illuminates

ADD USER

SET FINGER

Press [OK]

Green LED blinking

SWIPE

1st FINGER

Swipe 1st finger several times over fingerprint scanner until two confirmation beeps emitted

SUCCESS

1st FINGER

Green LED blinking

SWIPE

2nd FINGER

Swipe 2nd finger several times over fingerprint scanner until two confirmation beeps emitted

SUCCESS

2nd FINGER

8. Set PIN code

Press [OK]

ADD USER

SET CODE

ENTER CODE

4-10 digits

Type in [PIN code] (4 to 10 digits)

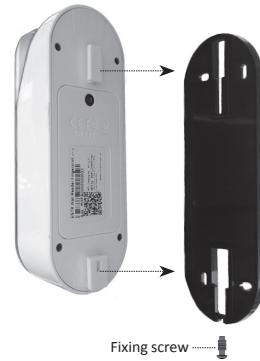
RETYPE CODE

4-10 digits

Retype [PIN code] (4 to 10 digits)

Matched codes	Mismatched codes
<div style="border: 1px solid black; padding: 5px; margin: 0 auto; width: 80%;"> <p style="text-align: center;">SUCCESS</p> <div style="text-align: center;"> </div> <p style="text-align: center;">SET CODE</p> </div>	<div style="border: 1px solid black; padding: 5px; margin: 0 auto; width: 80%;"> <p style="text-align: center;">FAILED</p> <div style="text-align: center;"> </div> <p style="text-align: center;">INVALID</p> </div>

- Hang the reader on the base plate.
- Tighten fixing screw.



6.5 Unlock the door

OPTION 1:
Place finger on fingerprint scanner.
Short beep emitted & white LED is on.
Swipe finger over fingerprint scanner
Fingerprint authorized: Blue LED blinking and unlock command is sent.
Fingerprint not authorized: Red LED is **ON**.
The device goes to standby.



OPTION 2:
Touch the Fingerprint Touchpad
Screen shows user code
Enter your code → **[OK]**



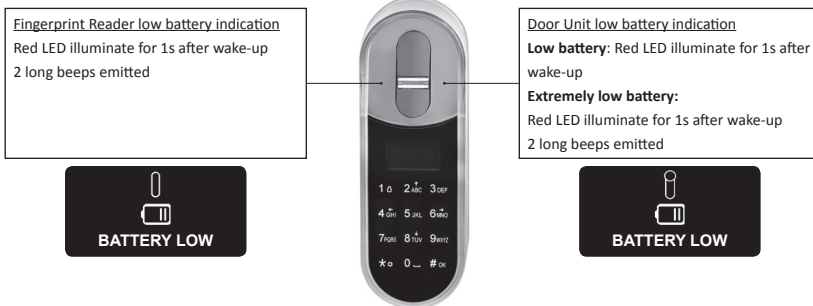
Note: In case ENTR™ lock hasn't succeed to unlock the door, unlock failed message appear on the screen.

6.6 Lock the door

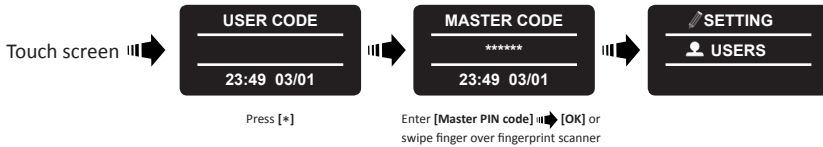
Touch the Fingerprint Touchpad
Press **[#]** → **[1]**

6.7 Low battery indication

Warning signal blinking

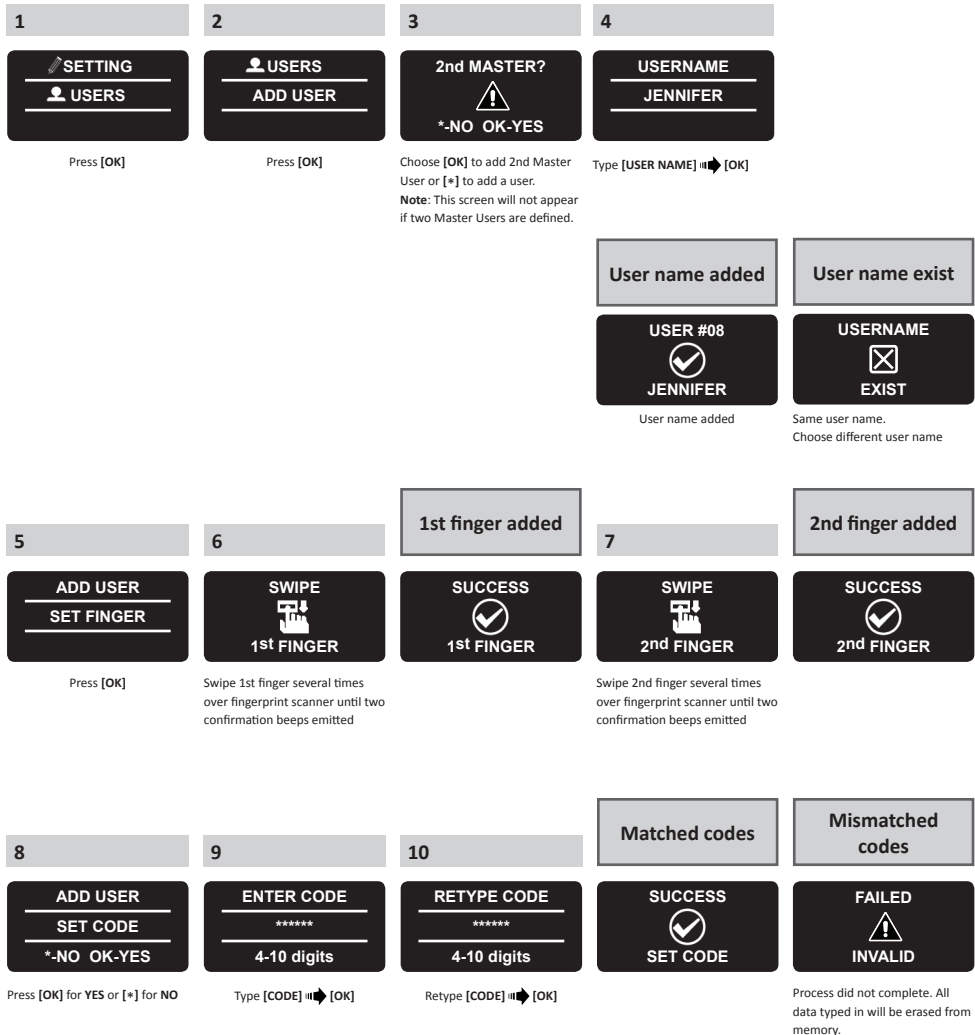


6.8 Setting menu

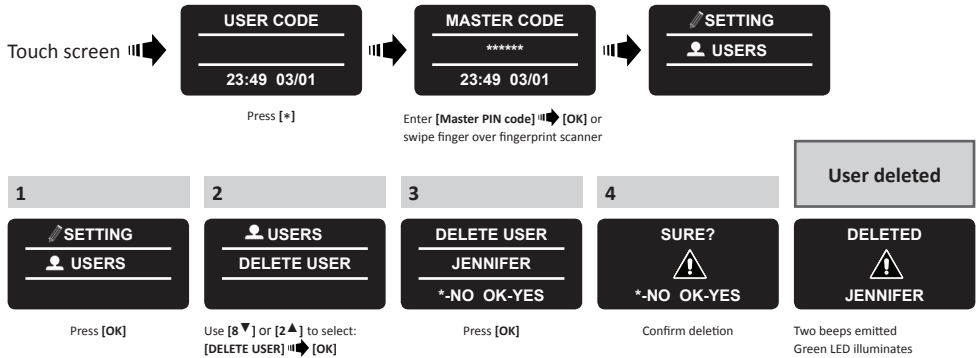


6.9 Add user

The unit allows adding up to 20 users. For each user two different fingerprints and one PIN code. Use different user name for each user.

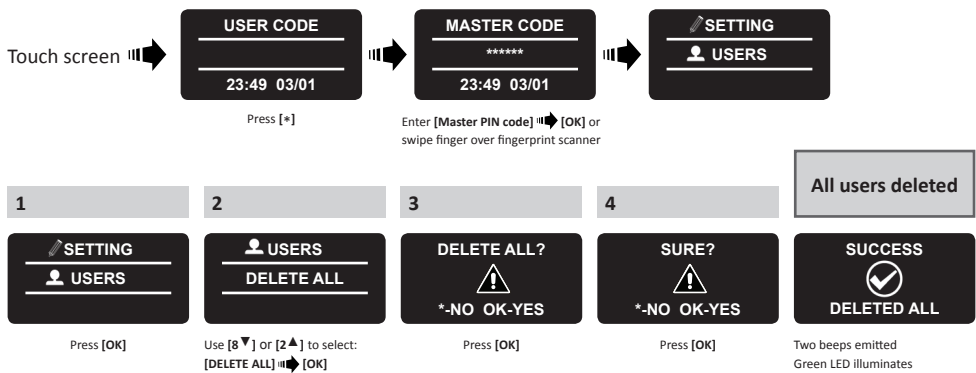


6.10 Delete user



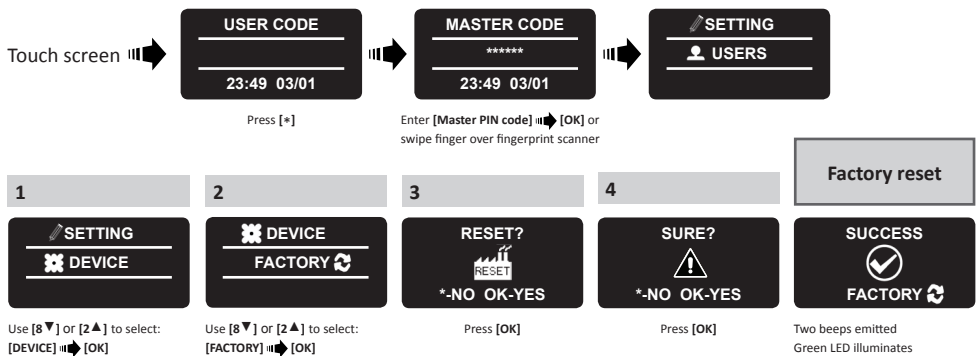
Note: First Master User cant be deleted unless doing factory reset.

6.11 Delete all users



6.12 Factory reset

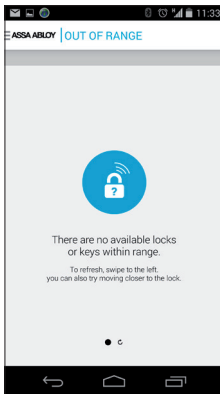
Warning: The factory reset action will delete all information stored in the memory, users and matched lock.



7. Smartphone application

7.1 Application installation

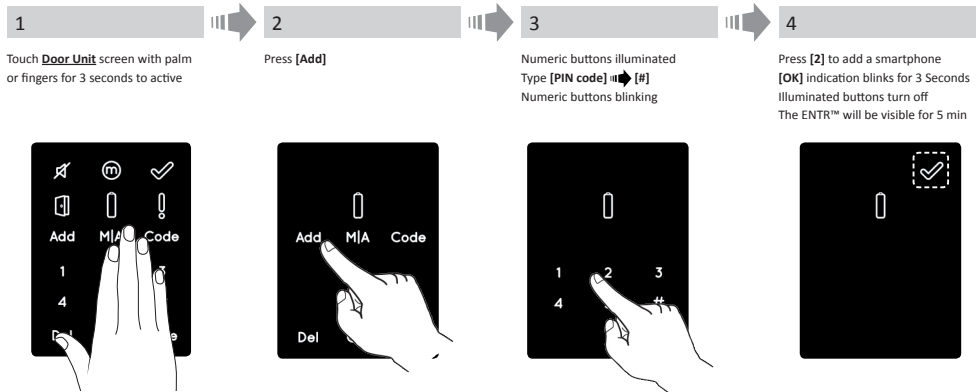
- Connecting an Android smartphone: go to Google Play to download the ENTR™ application.
System requirements: Android 4.4
- Connecting an iPhone/iPad: go to the app store to download the ENTR™ application.
System requirements: iOS 7.0 or higher
- Bluetooth low energy compliant



Starting the ENTR™ app before pairing a lock will display: "There are no available locks or keys within range".

7.2 Pairing a smartphone

This procedure is done via the ENTR™ lock door unit.

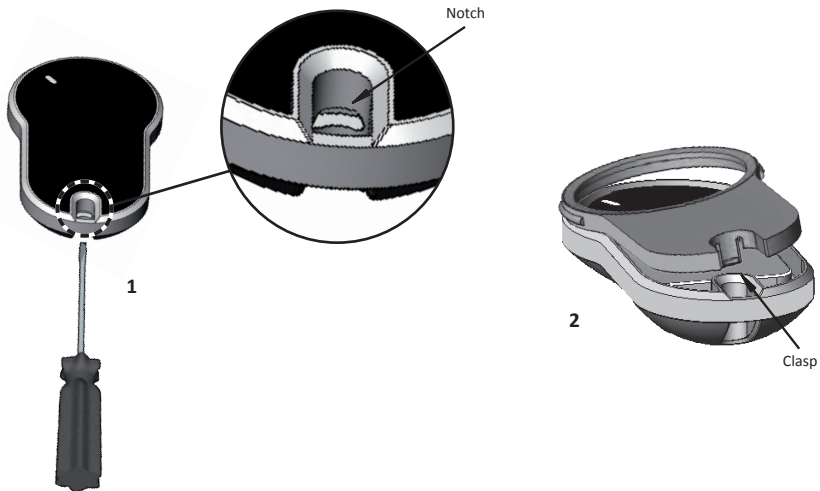


Start the ENTR™ app and follow the steps described in order to pair the smartphone with the ENTR™ lock
To download the app user manual visit your local Yale web site.

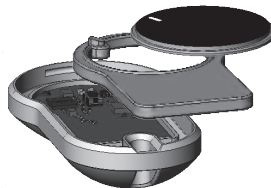
8. Remote control battery change

8.1 Battery removal

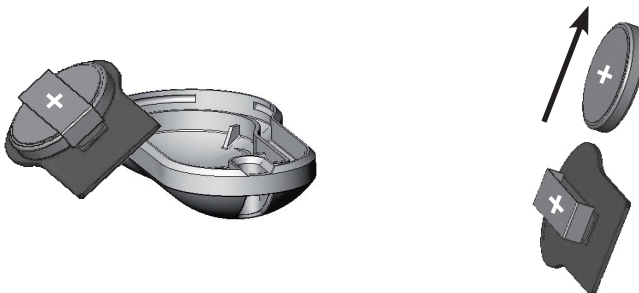
- a. Release the lid by safely inserting a tool into the notch (1) and pressing the lid clasp (2).



- b. Take out the push button and the intermediate part

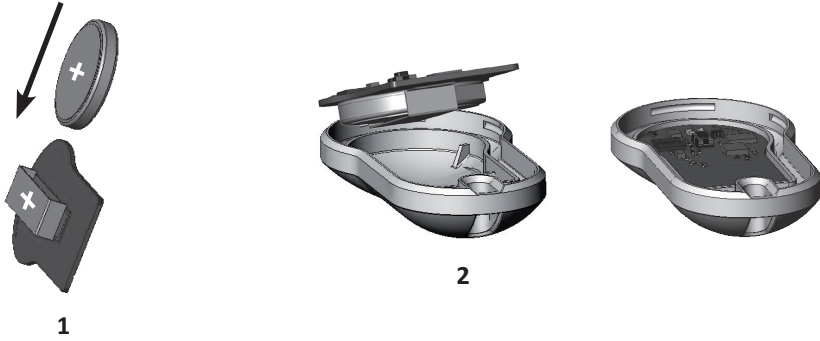


- c. Take out the electronic board with the battery and take the battery out.

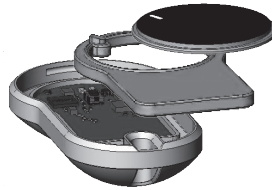


8.2 Battery insertion

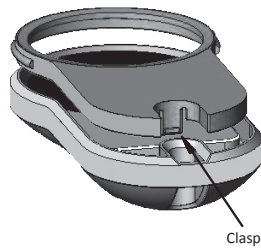
- a. Insert the battery (CR2032) according to the "+" "-" signs (1)
- b. Insert the electronic board with the battery into the remote housing (2)



- c. Assemble the intermediate part and the push button over the electronic board



- d. Place the lid and press until the clasp will pop into the notch



9. Troubleshooting

9.1 Limitations and external influences

1. Door position sensor might be influenced by external electromagnetic interference.
2. After mechanical key operation, the user should unlock and lock the unit electronically.

9.2 Cases

Symptom	Corrective action
Failure to pair a credential	<ol style="list-style-type: none"> 1. Repeat the process closer to the door unit 2. Turn the door unit OFF and back ON 3. Smartphone - reboot the smartphone and the Door Unit
Door unit beeps constantly	Place the knob in zero position
Cant connect mobile app with the ENTR™	Other phone user is already connected to the ENTR™. Only one smartphone can connect to the ENTR™ at the same time
2 sets of double long beeps in every lock or unlock operation	Low battery indication; Charge the Door Unit
ENTR™ unlocks the door instead of locking it	Repeat door configuration process. Define [1] for left side lock or [3] for right side lock See page 11 - Door configuration
Bolts are going out when the door is open	<ol style="list-style-type: none"> 1. Check if the magnet exists 2. Unlock the door using the sliders, quickly shut the door and lock it using the sliders
ENTR™ doesn't lock automatically After 5 minutes that the door is open	Close the door and lock using credential or slide up on sliders
Automatic locking might be effected by external electro-magnetic fields that results in wrong reading of door positioning. That may cause the door to remain unlocked.	
Sliders doesn't response as expected	Turn OFF the unit, wait 3 seconds and turn it back ON. Avoid touching the unit until you hear power up beeps
Touch panel doesn't response as expected	
Latch isn't pulled (high friction on the bolts & latch)	<ol style="list-style-type: none"> 1. Pull/push the door toward the frame 2. Consult your installer to adjust the door or lock case
Error sound emitted during lock / unlock action	
Placing a code in the Touchpad Reader ends in wrong code, even if the code is correct	The specific code already exists
Operating key will not operate the cylinder	Push the key towards the cylinder and try to operate. If not turning call a locksmith



LIMITED WARRANTY

Yale® hereby warrants, to the end user ("Purchaser") who purchased the genuine Yale® product ("Product"), from an authorized Yale® dealer ("Dealer"), that the Product will be free from defects in materials and workmanship ("Defects"), for a period of two years from the date the Product was purchased from Yale®'s authorized dealer. Subject to the terms and conditions indicated below, Yale® will repair or replace such Product or part thereof which, upon inspection by Yale®'s authorized dealer, is found to be defective, despite the Product not having been subjected to Improper Activity (as defined below).

Improper Activity shall render this warranty void. "Improper Activity" includes any and all of the following: installation by anyone other than a Dealer: improper installation; use/operation/maintenance other than in accordance with Yale®'s instructions and requirements (as directed below); tampering by Purchaser; neglect; damage by the application of force; bending; breaks; cracks; scratches; any other act of vandalism; repair or alteration by anyone other than a Dealer: use of keys, key blanks, cylinders, locks, approved batteries, accessories and/or other components that are not suitable and genuine Yale® products; all the foregoing as determined by Yale®, in its sole judgment.

Some basic instructions and recommendations for correct use of the Product are shown overleaf.

Yale®'s sole obligation under this limited warranty is to repair or replace, at Yale®'s sole discretion, at the venue of a Dealer, any Product and/or Product component found by Yale® to have Defects. This limited warranty does not grant any other rights or give rise to any other obligation, or absolve Purchaser of the responsibility to employ any other suitable measures, by whatever means, including insurance, against the risk of personal injury or damage to property. This limited warranty relate to product's defects only. Yale® shall be liable, in any event, for any labour costs associated with the product and its installation process.

In order to facilitate the warranty service and enable Yale® to determine entitlement under this warranty, Purchaser must first return the Product, with proof of purchase from a Dealer, to Yale®, either directly, or through the Dealer from whom Purchaser purchased the Product. All shipping, handling, travel, service call and/or other incidental and/or related charges are fully payable by Purchaser only and are not included in this limited warranty.

THE USE OF OTHER THAN SUITABLE, GENUINE Yale® COMPONENTS MAY CAUSE SEVERE DAMAGE TO THE PRODUCT, AND WILL VOID THIS LIMITED WARRANTY. THIS LIMITED WARRANTY MAY NOT BE ASSIGNED OR OTHERWISE TRANSFERRED IN ANY WAY AND MAY NOT BE EXTENDED, ALTERED OR VARIED.

TO THE FULLEST EXTENT ALLOWABLE BY THE LAWS APPLYING HERETO, THIS LIMITED WARRANTY IS IN LIEU OF ANY OTHER WARRANTIES, EITHER EXPRESS OR IMPLIED, INCLUDING BUT NOT LIMITED TO ANY WARRANTIES OF MERCHANTABILITY OR FITNESS FOR A PARTICULAR PURPOSE, ALL OF WHICH ARE EXPRESSLY EXCLUDED AND DISCLAIMED. Yale® WILL NOT BE LIABLE FOR LOSS OF PROFITS, ANY SPECIAL, INCIDENTAL, OR CONSEQUENTIAL DAMAGES, WHICH PURCHASER MAY SUSTAIN, OR PUNITIVE DAMAGES, EVEN IN THE EVENT OF NOTICE OF THE POSSIBILITY OF SUCH DAMAGES.



Some Basic Instructions and Requirements for Correct Use of ENTR™ Products

Protection of Keys:

- Keys should be used only for their original purpose, of operating the corresponding cylinder.
- Your key carries a code. Make sure you keep it concealed.



- Only genuine Yale® key blanks should be used.
- Keys must be inspected periodically and must be replaced when show physical wear.

Cylinders:

- Cylinders must not be submerged in water, or exposed to any chemical wash, or be painted.
- Protect the cylinder from dirt & dust.
- Protect your cylinder from exposure to extreme temperatures. (External -20 C to +80C, Internal -10C to +50C)
- The cylinder's keyway should be lubricated at least once per year. In any heavy use environments, extreme weather conditions, lubrication must be conducted every three months.

LEGAL NOTICES

Mobile phones

ENTR™ warranty should not cover any problem related with end user mobile phone/smartphone or its operation system, by connecting to ENTR™ lock or installing ENTR™ application. For any other limitation please refer to End User licence agreement.

Items excluded / limited from this warranty

- Screws
- Normal wear and tear
- Cleaning with cleaning detergents
- Warranty for ENTR™'s Main battery is limited for 1 year

Trademarks

ENTR™ is a trademark/trade name belonging to ASSA ABLOY. No unauthorised use may be made of these trademarks.

External Influences

- Services are subject to various external influences, outside our control, such as satellites and cellular or other communications networks, and may also be influenced by weather conditions, frequency jamming/ interference, improper use or activity, interference, vandalism, destruction etc.
- Services may also be adversely affected, or rendered impossible when the ENTR™ product is located in places where a signal may not be available - for example, a garage, parking lot, tunnel or other such location.
- The fingerprint sensor may not work for certain members of the population, for physiological reasons

Limitations of Services and Liability

The Services will not always provide an accurate picture of whether or not assets have been subject to unauthorized access - for example, if the ENTR™ product is accessed using the original key or a duplicate key.

- Proper functioning of the ENTR™ product may be impaired if the ENTR™ product is not installed and maintained properly, in accordance with the instructions provided with the ENTR™ product. Installation and/ or disassembly must be carried out only by authorised ENTR™ installation personnel.



An ASSA ABLOY Group brand

www.yalelock.com

ASSA ABLOY